

# THE DATUM POINT

Newsletter of the  
NORTHERN VIRGINIA CHAPTER (NVC) OF THE  
ARCHEOLOGICAL SOCIETY OF VIRGINIA

Chapter Website – [www.nvcasv.org](http://www.nvcasv.org) June 2015



## FROM THE PRESIDENT DIANE SCHUG-O'NEILL

Happy June, folks; we're into Summer weather, for sure. I cannot stress enough to *bring water with you, to any site, for any activity!* It doesn't matter if you're just out there to take a tour and feel you'll just be walking around, bring water. Other things you'll be needing or even before you bring any tools or a hat, sunscreen lotion, and bug spray. June 13<sup>th</sup> is the designated Celebration Day for both the ASV (75 years!) and Kittiewan (10 years!) so there will be plenty of cake, chairs, and a canopy for the event.

I would like to welcome **John Mullen** and **Caitlin Garvey** to our ranks. Some of you may already know John from his association with FOFA or have run across his work with Wetland Studies and Solutions. John and Caitlin, introduce yourself at future meetings and we'll all be sure to extend that famous NVC smile right back.

Later in June, the White House dig will be taking place in Page County; Dr. Carole Nash (JMU) is the archaeologist in charge. Located along the South Fork of the Shenandoah River, five miles west of Luray, this White House is one of the Shenandoah Valley's most recognized landmarks. You can learn more at the foundation's website (<http://whfarmfoundation.org/>). Look for shots on this project in July's *Datum Point*.

In May, we enjoyed an awesome talk from Dr. Stephen Potter (NPS) along with some amazing family heirlooms he and his wife (fellow archaeologist, Carter Shields) so graciously shared with us. If you didn't get to the meeting, you can see some shots on our website.

## MEETING THIS MONTH AT THE JAMES LEE CENTER

**JUNE 10<sup>TH</sup>, 7:30PM**

## “Crafting Preservation Criteria: The National Register of Historic Places and American Historic Preservation”

**by John H. Sprinkle, Jr.**

The National Register of Historic Places (NRHP) is the nation's official list of places worthy of preservation, but where did the criteria that shape the construction of a useable past come from? This presentation elucidates the "prehistory" of the NRHP, with a special focus on the evolution of the concept of archaeological significance, and helps practitioners and students alike connect with the origins of preservation's contemporary paradigm.

Sprinkle joined the NPS in 1998 where he oversaw the National Historic Landmarks Survey and the Federal Preservation Institute before becoming the agency's Bureau Historian in 2013. Dr. Sprinkle holds a Ph.D. in American history from the College of William and Mary and has taught courses at several local colleges and universities. He is the author of *Crafting Preservation Criteria: The National Register of Historic Places and American Historic Preservation* (Routledge 2014). Dr. Sprinkle is a life member and former President of the Archaeological Society of Virginia (1997-1998). John Sprinkle is the Chair of the Alexandria Historical Restoration and Preservation Commission.

## **OLD COLCHESTER**

By CART

Work continues on the brick feature revealed in 2011 at the Cemetery Site, Site 44FX0704, at Old Colchester Park and Preserve. This large brick foundation spans over 15 units, over five meters (16 feet) in size, and could be the chimney base for a structure such as an industrial building. No definitive corners of the structure have been discovered, though edges of the bricks have been exposed in an interesting circle and arch shapes (see picture).

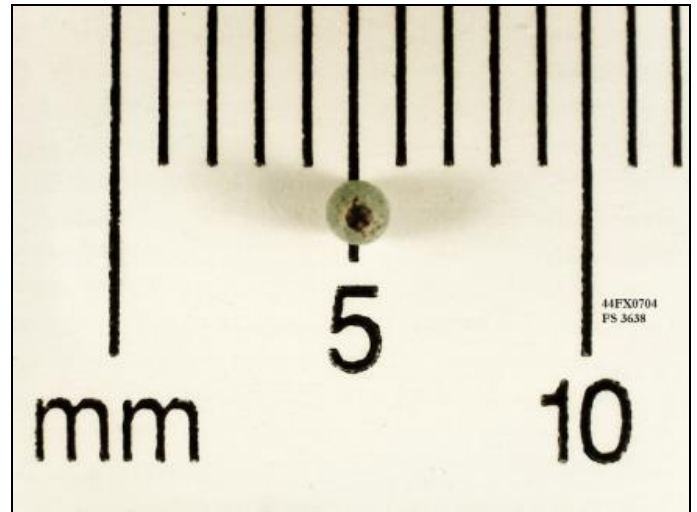


Brick structure

Artifacts recovered from recent excavations include white salt glazed stoneware, wine bottle fragments, porcelain and a variety of hand wrought nails. Much of the soil is saved for wet water screen window screen processing, and within these samples CART staff and volunteers have discovered tiny beads (see picture), tableware glass, and tin glaze spall fragments.

Some of the artifacts we are particularly interested in finding in these samples are ones which are too small to be recovered through quarter inch screening in the field such as lead shot, beads, and straight pins. These small domestic artifacts inform us of the activities and people using the land. This data will be entered into our database system to allow for in-depth analysis of the site by ourselves and future researchers. This process allows us to individually analyze each artifact to get a better understanding of site function and activity areas.

Datum Point



Bead from water screening

Kellie, our summer intern, has begun her project with CART, a comparison of artifacts from quarter inch and window screen soil from current excavations to a feature exposed and excavated in 2011. Comparing the artifacts from two features across the site will inform us of areas of usage for domestic or work areas, and perhaps more information of the inhabitants of the structure near the Cemetery Site. Internship activities range from unit excavation, water screening, artifact washing and picking window mesh waterscreen soil.

With the dry summer weather, CART will continue work on Site 44FX0704, please email [cart.volunteers@live.com](mailto:cart.volunteers@live.com) to volunteer in the field, and check our blog at [cartarchaeology.wordpress.com](http://cartarchaeology.wordpress.com) for other volunteer opportunities around the county. As the summer heat intensifies the lab will be nice and cool A/C controlled, please email [cartarchlab@live.com](mailto:cartarchlab@live.com) to volunteer inside.

## **ANOTHER DIG IN FREDERICK COUNTY**

By Jack Hranicky

We conducted a two-day dig on the Arkfeld site in Frederick County over the Memorial Day weekend with 15 people. Eight volunteers were from the Northern Virginia Chapter. We recovered over two hundred artifacts, many of which were effigy forms. Two are shown in the picture with Michele Pieper. She found a large drilled pendant.

June 2015

page 2

I am happy to say we had four certification participants. And, Michele's photo was published in the Winchester Star. See what can happen with certification. We dug about half of a 17x13 foot test square called M test square, and plan to finish it in September. We suspected it had artifacts, and the excavation confirmed it. We believe it is a ceremonial tribute area. We did not find any organic remains in the square.

The Arkfeld site is a 10-acre complex where Early Americans mined sandstone, shale, and limestone. They also fired clay as confirmed by the Oxford TL Lab in England. Of course, the author and as well as the site are the most controversial thing(s) in Virginia.

We are in our third year and have catalogued over 4,000 artifacts. We now have five sites with similar artifacts in western Virginia. One of the most interesting aspect of these sites are pitch-coated artforms. Pitch was not used in the Holocene, nor was limestone, except as limestone-tempered pottery at the Woodland Fout Site near Winchester. Incidentally, Howard MacCord and I dug that site. I guess I'm hooked on limestone as we are also working on a prehistoric limestone quarry in Rockbridge County. And, someday ask me how I came up with a 17x13 square.



Michele Pieper Holding Two Artifacts from the Arkfeld Site Test Excavation



**WE'RE HAVING A PARTY!**  
**...and you're invited!!**



## KITTEIWAN PLANTATION

*It's the 75th Anniversary of  
the Archeological Society of  
Virginia and Kittiewan's  
10th Anniversary!*

*Come help us  
celebrate!!*

**JUNE 13, 2015**

**10:00am - 12:00pm, 1:00pm -4:00pm**

Kittiewan Plantation  
12104 Weyanoke Road  
Charles City, Virginia



### Schedule of Public Events

10:00am – 12:00pm: Open House Tours

1:00pm – 4:00pm: Open House Tours

### On-Going:

- Music by the Bowld Sojer Band
- Artifact Identification Session (bring your collection!)
- Displays/information by ASV Chapters
- Special archeological exhibit: ASV and Kittiewan History
- Cake and punch for all visitors

### ASV Member Events

12:00pm – 12:30pm: ASV 75th Ceremony

12:30pm – 1:30pm: ASV Member Lunch



Suggested donation: \$5 per family  
The Archeological Society of Virginia is a  
non-profit 501-C(3) organization

**A new walking trail has been blazed at Kittiewan connecting the 18<sup>th</sup> and 19<sup>th</sup> century Rickman/Harrison Cemetery and four Civil War gun pits and associated trench from June 1864, when the Union Army was crossing the James River. A walking trail has been re-established down to Kittiewan Creek to view the 1728 tomb of Elizabeth Hollingshorst. These walking tours will open during the June event!**

## 2015 NVC/ASV CHAPTER OFFICERS

<b>President</b>	Diane Schug-O'Neill	<a href="mailto:schugoneill@gmail.com">schugoneill@gmail.com</a> 703-249-9593
<b>Vice-President</b>	Chris Havlicek	<a href="mailto:christo829@juno.com">christo829@juno.com</a>
<b>Treasurer</b>	Isabella Martinez	<a href="mailto:ipease@cox.net">ipease@cox.net</a>
<b>Corresponding Sec.</b>	Maggie Johnson	<a href="mailto:stillmaggie@cox.net">stillmaggie@cox.net</a>
<b>Recording Sec.</b>	Nancy Ehlke	<a href="mailto:rce2@cox.net">rce2@cox.net</a> 703-978-6724
<b>Datum Point Editor</b>	Patrick O'Neill	<a href="mailto:patrickloneill@verizon.net">patrickloneill@verizon.net</a> 703-249-9593
<b>Webmaster</b>	Diane Schug-O'Neill	<a href="mailto:schugoneill@gmail.com">schugoneill@gmail.com</a>
<b>Certification Liaison</b>	Ann Wood	<a href="mailto:annpwood@verizon.net">annpwood@verizon.net</a>

### Other Public Archaeological Programs in Northern Virginia

<b>Fairfax Co. Archaeology (FCPA)</b>	Dr. Elizabeth Crowell	<a href="mailto:elizabeth.crowell@fairfaxcounty.gov">elizabeth.crowell@fairfaxcounty.gov</a> 703-534-3881
<b>Mount Vernon</b>	Eleanor Breen	<a href="mailto:ebreen@mountvernon.org">ebreen@mountvernon.org</a>
<b>Gunston Hall</b>	Dave Shonyo	<a href="mailto:archaeology@gunstonhall.org">archaeology@gunstonhall.org</a> 703-550-0441
<b>Alexandria Museum</b>	Francine Bromberg	<a href="mailto:Francine.bromberg@alexandriava.gov">Francine.bromberg@alexandriava.gov</a> 703-838-4399

### NVC/ASV MEMBERSHIP APPLICATION

**Name:** \_\_\_\_\_

**Phone:** \_\_\_\_\_

**ADDRESS:** \_\_\_\_\_

\_\_\_\_\_

**EMAIL:** \_\_\_\_\_

**Individual (\$15)** \_\_\_\_\_

**Student (\$5)** \_\_\_\_\_

**Family (\$17)** \_\_\_\_\_

**Return to:**

**Isabella Martinez, Treasurer, NVC/ASV**

**8304 Graceway Drive**

**Lorton, VA 22079**

**Chapter members must join our parent organization, the Archeological Society of Virginia at [asv-archeology.org](http://asv-archeology.org)**

**The Chapter meets at 7:30p.m. on the 2<sup>nd</sup> Wed. of each month at the James Lee Center, 2855-A Annandale Road, Falls Church, VA.**

**EVERYONE IS WELCOME!!!!**